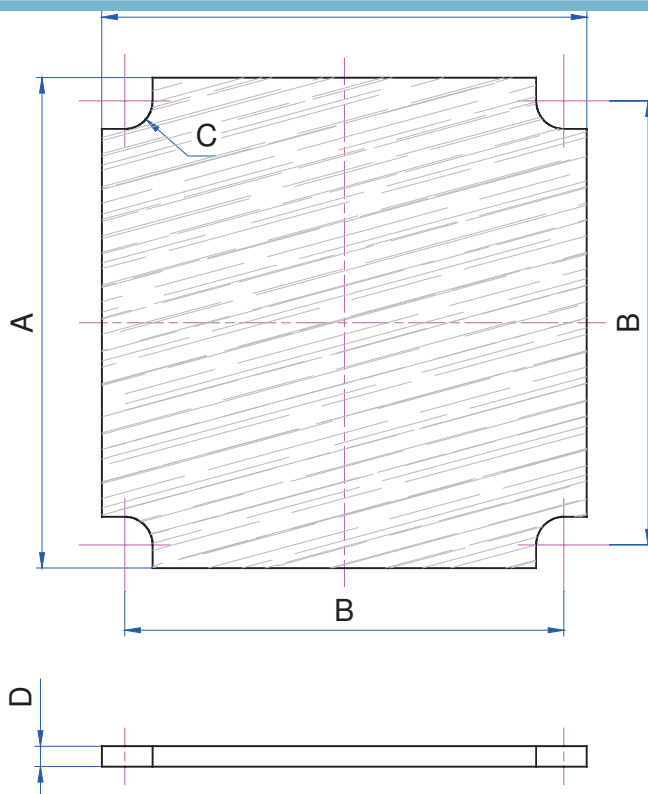




Material: Coarse dust filter FL100
Filter class: G2 DIN EN 779
Material thickness: approximately 5 mm
Fire resistance: self-extinguishing DIN 53438 F1
Equals guideline: 2002/95/EG (RoHS) and EG 1907/2006 (REACH)
 The installation of the coarse dust filters is possible in combination with guard grills.



Article number: **GSF** — **40** — **01** — **Bxx**
 Article fan size type code dimension B for fan size 50

Article no.	A	B	C	D
GSF-25-01	25,0	20,0	R 2,5	5,0
GSF-30-01	30,0	24,0	R 3,0	5,0
GSF-40-01	40,0	32,0	R 3,0	5,0
GSF-50-01-B40	50,0	40,0	R 3,0	5,0
GSF-50-01-B42	50,0	42,0	R 3,0	5,0
GSF-60-01	60,0	50,0	R 3,5	5,0
GSF-80-01	80,0	71,5	R 4,0	5,0
GSF-92-01	92,0	82,5	R 4,5	5,0
GSF-119-01	119,0	105,0	R 5,5	5,0

All dimensions in mm! CAD-data-sheets at: www.thoptec.de

Legend:

Size A:	max. outside dimension	Size B:	distance between plug-in pegs/nipples	Size C:	radius coarse dust filter drilled hole	Size D:	height / thickness of material
----------------	------------------------	----------------	---------------------------------------	----------------	--	----------------	--------------------------------



For Info!

With our CO2 Laser we are able to cut out variable contours from various materials/ filter materials, foam materials and seal materials etc. (see page 27).