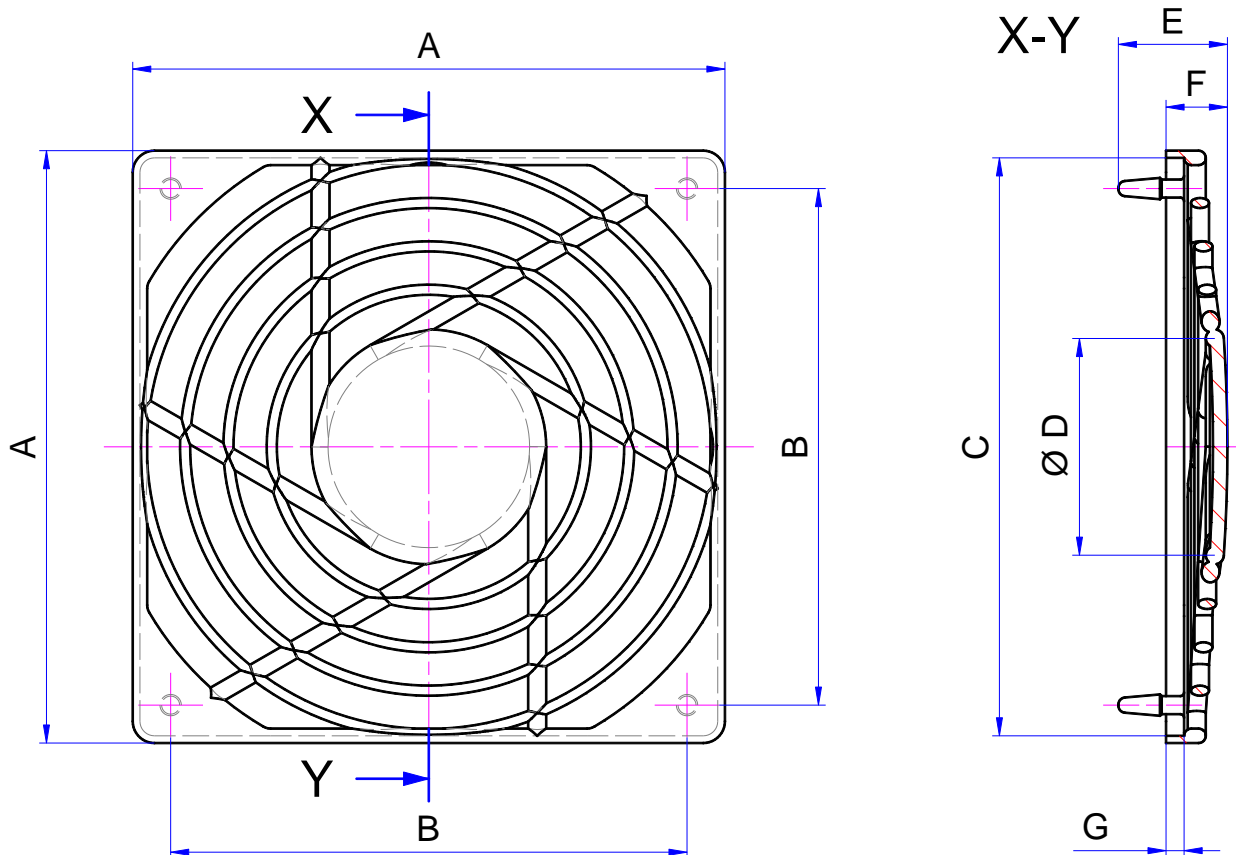




Material: Plastic (PA6 / PA66)
Colour: black (other colours on request)
Fire resistance: UL94-V-2
Equals guideline: EG 2011/65/EU (RoHS) and EG 1907/2006 (REACH)
 The guard grills can simply plugged into the pegs from the fan sleeves type LM.



Article number:

SG **40** **01** **Bxx** dimension B
for fan size 50

Article

fan size

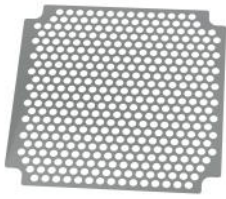
type code 01 = dimension A as small as possible.

type code 02 = dimension A as big as possible, makes sure that hole-cut out 3 (plug and turn mounting) is completely covered by the guard grill.

Article no.	A	B	C	D	E	F	G
SG-25-01	27,0	20,0	25,0	10,0	12,1	7,0	2,0
SG-25-02	31,0	20,0	25,0	10,0	12,1	7,0	2,0
SG-30-01	32,0	24,0	30,0	14,0	12,1	7,0	2,0
SG-30-02	36,0	24,0	30,0	14,0	12,1	7,0	2,0
SG-40-01	42,0	32,0	40,0	18,0	12,6	7,5	2,5
SG-40-02	46,0	32,0	40,0	18,0	12,6	7,5	2,5
SG-50-01-B40	52,0	40,0	50,0	24,0	13,1	8,0	2,5
SG-50-01-B42	52,0	42,0	50,0	24,0	13,1	8,0	2,5
SG-50-02-B40	56,0	40,0	50,0	24,0	13,1	8,0	2,5
SG-50-02-B42	56,0	42,0	50,0	24,0	13,1	8,0	2,5
SG-60-01	62,0	50,0	60,0	27,0	15,1	8,5	2,5
SG-60-02	66,0	50,0	60,0	27,0	15,1	8,5	2,5
SG-80-01	82,0	71,5	80,0	30,0	15,1	8,5	2,5
SG-80-02	89,0	71,5	80,0	30,0	15,1	8,5	2,5
SG-92-01	94,0	82,5	92,0	30,0	15,1	8,5	2,5
SG-92-02	101,0	82,5	92,0	30,0	15,1	8,5	2,5
SG-119-01	121,0	105,0	119,0	42,0	16,6	9,0	3,0
SG-119-02	128,0	105,0	119,0	42,0	16,6	9,0	3,0

All dimensions in mm!

CAD Data sheets on www.thopec.de and on „TraceParts“.

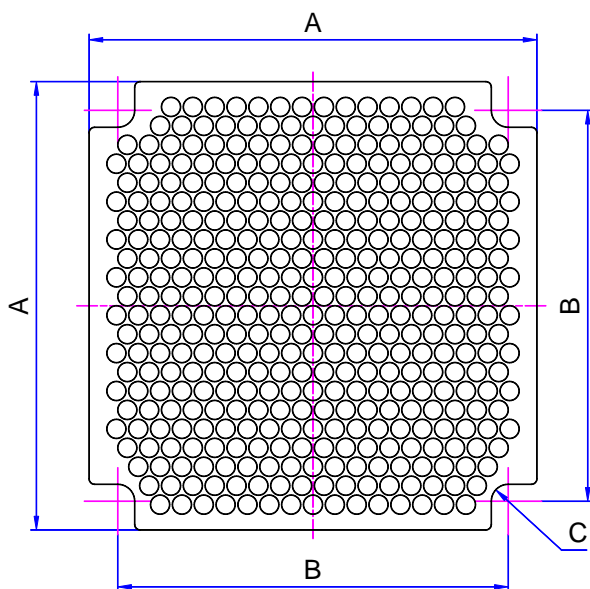


Material: stainless steel (spring V2A) material no. 1.4310/AISI 301
Material thickness: 0,2 mm
Equals guideline: EG 2011/65/EU (RoHS) and EG 1907/2006 (REACH)

The premium fan guard EMI-shields are manufactured in etching technique. The use of fan guard EMI-shields ensures the typically desirable condition that technical equipment does not disturb each other by unwanted electronic or electromagnetic effects. On a test an improvement regarding EMI-tightness could be determined overall the frequency range, in peaks up to approximately 50 %.

Additionally fan guard EMI-shields function as a touch protection and/ or prevent the absorption of filter materials while existing just one wide opening in the housing box. The fan guard EMI-shields can be mounted either at the inside or at the outside of the housing wall. The **inside installation** has the **advantage** that the fan sleeve squeezes directly the fan guard EMI-shields onto the bare inside wall or by using a plastic-case onto the metallic coated inside wall. The fan guard EMI-shields seal up the fan opening in techniques of electromagnetic compliance. The thin grill made from stainless steel takes care of **EMI-protection** and a **maximum of air circulation** at the same time.

Quite different by comparison with a use of a plastic or a customary guard grill or a perforation in the housing box, an **essential noise alteration** by the fan guard EMI-shield is almost **not existing** when the fan is working.

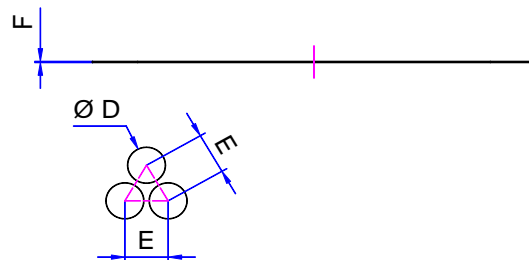


Type RE

round hole perforation in offset pattern

Free air flow rate approximately at **75 %**

Installation possible in combination with fan sleeve type LM!

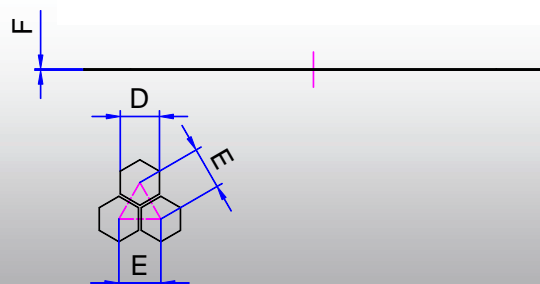
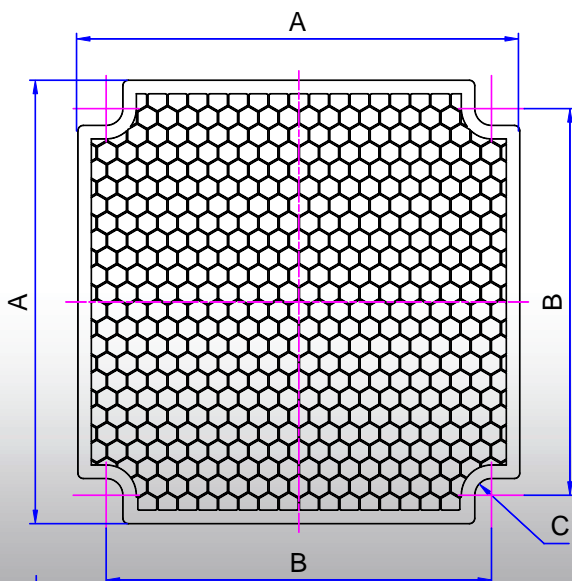


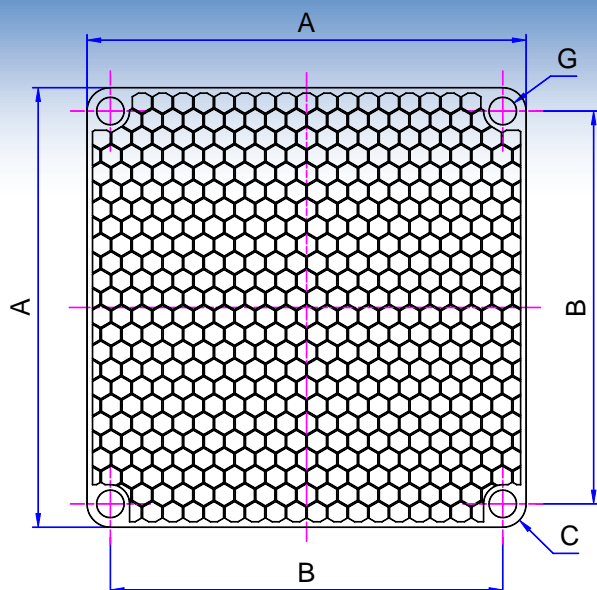
Type SE

hexagon perforation in offset pattern

Free air flow rate approximately at **85 %**

Installation possible in combination with fan sleeve type LM!



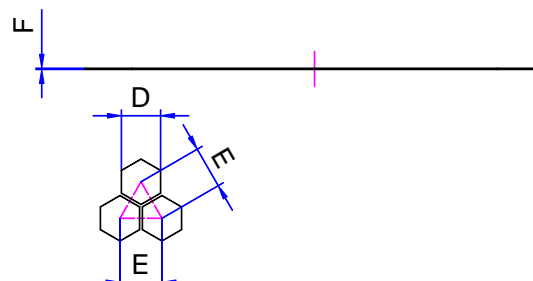


Type SH

hexagon perforation in offset pattern

Free air flow rate approximately at **85 %**

Installation possible in combination with fan sleeve type SLM, but also by using the four drills and fix it with customary screws or rivets. Dimension of A is a little smaller/ max. as big as the fan.



Because of the etching techniques special sizes, individual texts or logos are possible without having significant additional costs or efforts! We will give the necessary support if there are any questions in etchings techniques!

Article number: **LEB** — **40** — **RE / SE / SH** — **25** — **Bxx**

Article fan size type hole diameter in 1/10 mm dimension B for fan size 50

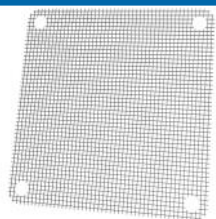
Article no.	A	B	C	D	E	F	G
LEB-25-RE-15	27,0	20,0	R 1,75	1,5	2,00	0,2	-
LEB-25-SE-15	27,0	20,0	R 1,75	1,5	1,75	0,2	-
LEB-25-SH-15	25,0	20,0	R 3,00	1,5	1,75	0,2	Ø 2,8
LEB-30-RE-20	32,0	24,0	R 2,10	2,0	2,50	0,2	-
LEB-30-SE-20	32,0	24,0	R 2,10	2,0	2,25	0,2	-
LEB-30-SH-20	30,0	24,0	R 3,00	2,0	2,25	0,2	Ø 3,5
LEB-40-RE-25	42,0	32,0	R 2,40	2,5	3,00	0,2	-
LEB-40-SE-25	42,0	32,0	R 2,40	2,5	2,75	0,2	-
LEB-40-SH-25	40,0	32,0	R 4,00	2,5	2,75	0,2	Ø 4,8
LEB-50-RE-30-B40	52,0	40,0	R 2,40	3,0	3,50	0,2	-
LEB-50-SE-30-B40	52,0	40,0	R 2,40	3,0	3,25	0,2	-
LEB-50-SH-30-B40	50,0	40,0	R 5,00	3,0	3,25	0,2	Ø 4,8
LEB-50-RE-30-B42	52,0	42,0	R 2,40	3,0	3,50	0,2	-
LEB-50-SE-30-B42	52,0	42,0	R 2,40	3,0	3,25	0,2	-
LEB-50-SH-30-B42	50,0	42,0	R 5,00	3,0	3,25	0,2	Ø 4,8
LEB-60-RE-35	62,0	50,0	R 2,70	3,5	4,00	0,2	-
LEB-60-SE-35	62,0	50,0	R 2,70	3,5	3,75	0,2	-
LEB-60-SH-35	60,0	50,0	R 5,00	3,5	3,75	0,2	Ø 5,0
LEB-80-RE-35	82,0	71,5	R 3,20	3,5	4,00	0,2	-
LEB-80-SE-35	82,0	71,5	R 3,20	3,5	3,75	0,2	-
LEB-80-SH-35	80,0	71,5	R 4,25	3,5	3,75	0,2	Ø 5,0
LEB-92-RE-40	94,0	82,5	R 3,20	4,0	4,50	0,2	-
LEB-92-SE-40	94,0	82,5	R 3,20	4,0	4,25	0,2	-
LEB-92-SH-40	92,0	82,5	R 4,75	4,0	4,25	0,2	Ø 5,0
LEB-119-RE-50	121,0	105,0	R 4,20	5,0	5,50	0,2	-
LEB-119-SE-50	121,0	105,0	R 4,20	5,0	5,30	0,2	-
LEB-119-SH-50	119,0	105,0	R 7,00	5,0	5,30	0,2	Ø 5,5

All dimensions in mm!

CAD Data sheets on www.thoptec.de and on „TraceParts“.

Legend:

Size A:	max. outside dimension	Size C:	radius EMI-shield drilled hole	Size E:	distance between holes on EMI-shield	Size G:	diameter EMI-shield drilled hole
Size B:	distance between plug-in pegs/ nipples	Size D:	diameter holes on EMI-shield	Size F:	height/ thickness of material		

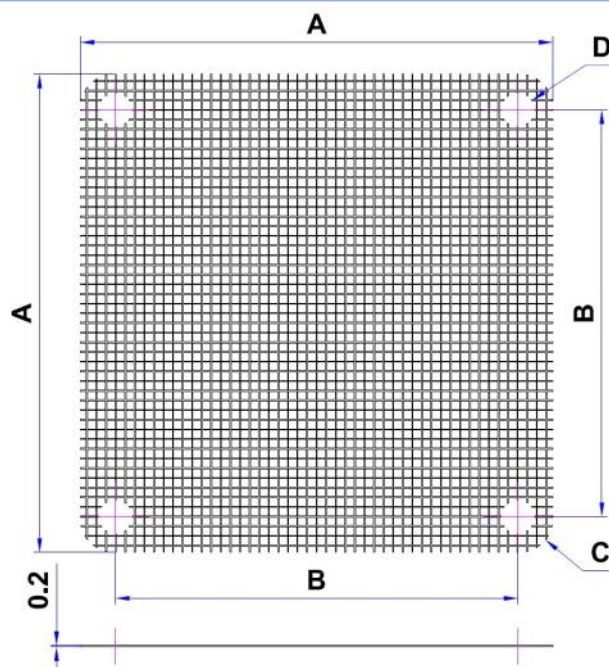


Material: plastic tissue (PVC free), anthracite

Material thickness: approximately 0,2 mm

Equals guideline: EG 2011/65/EU (RoHS) and EG 1907/2006 (REACH)

The installation of insect screens is possible in combination with fan sleeve type LM or SLM, but can be fixed together with the fan by customary screws or rivets.



Article number:

ISG	40	SF / SN	Bxx
Article	fan size	Type codes: SF for fan sleeves type LM SN for plug-in fan sleeves type SLM	dimension B for fan size 50

Article no.	A	B	C	D
ISG-25-SF	27,0	20,0	R 3,5	3,5
ISG-25-SN	27,0	20,0	R 3,5	2,6
ISG-30-SF	33,0	24,0	R 3,5	4,0
ISG-30-SN	33,0	24,0	R 3,5	2,6
ISG-40-SF	43,0	32,0	R 4,0	4,5
ISG-40-SN	43,0	32,0	R 4,0	4,0
ISG-50-SF-B40 / B42	53,0	40,0 / 42,0	R 4,5	4,5
ISG-50-SN-B40 / B42	53,0	40,0 / 42,0	R 4,5	4,0
ISG-60-SF	64,0	50,0	R 7,0	5,0
ISG-60-SN	64,0	50,0	R 7,0	4,0
ISG-80-SF	84,0	71,5	R 6,0	6,0
ISG-80-SN	84,0	71,5	R 6,0	4,0
ISG-92-SF	97,0	82,5	R 6,5	6,0
ISG-92-SN	97,0	82,5	R 6,5	4,0
ISG-119-SF	125,0	105,0	R 7,5	8,0
ISG-119-SN	125,0	105,0	R 7,5	4,0

All dimensions in mm!

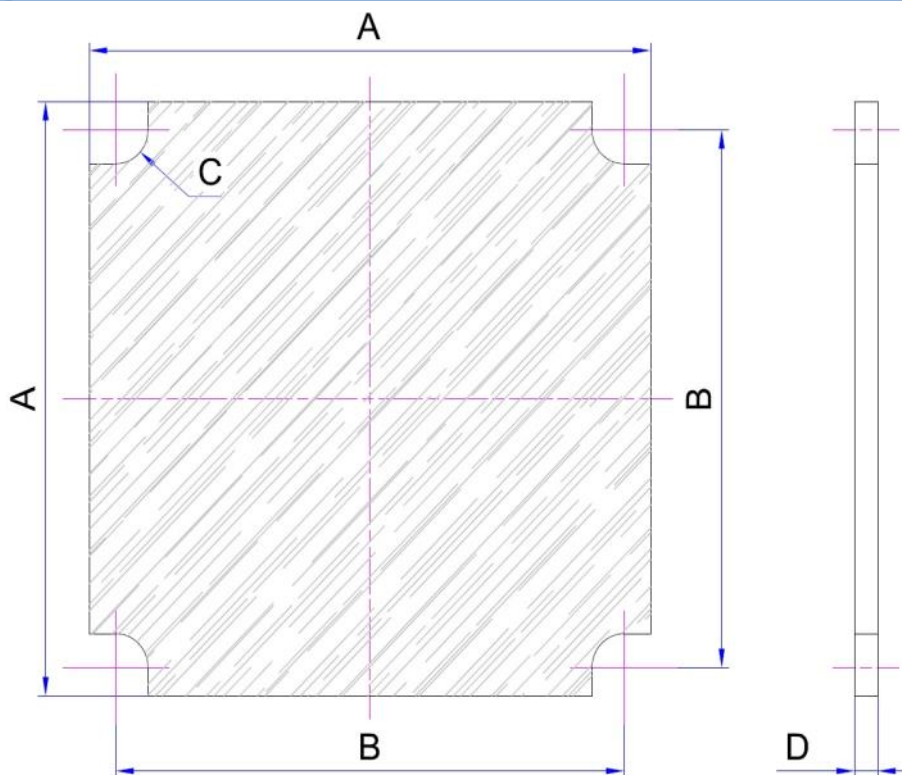
CAD Data sheets on www.thoptec.de and on „TraceParts“.

Legend:

Size A:	max. outside dimension	Size B:	distance between plug-in pegs/ nipples	Size C:	radius insect screen drilled hole	Size D:	diameter insect screen drilled hole
----------------	------------------------	----------------	---	----------------	--------------------------------------	----------------	--



Material: Coarse dust filter FL100
Filter class: G2 DIN EN 779
Material thickness: approximately 5 mm
Fire resistance: self-extinguishing DIN 53438 F1
Equals guideline: EG 2011/65/EU (RoHS) and EG 1907/2006 (REACH)
 The installation of the coarse dust filters is possible in combination with guard grills.



Article number:

GSF

40

01

Bxx

Article

fan size

type code

dimension B
for fan size 50

Article no.	A	B	C	D
GSF-25-01	25,0	20,0	R 2,5	5,0
GSF-30-01	30,0	24,0	R 3,0	5,0
GSF-40-01	40,0	32,0	R 3,0	5,0
GSF-50-01-B40	50,0	40,0	R 3,0	5,0
GSF-50-01-B42	50,0	42,0	R 3,0	5,0
GSF-60-01	60,0	50,0	R 3,5	5,0
GSF-80-01	80,0	71,5	R 4,0	5,0
GSF-92-01	92,0	82,5	R 4,5	5,0
GSF-119-01	119,0	105,0	R 5,5	5,0

All dimensions in mm!

CAD Data sheets on www.thoptec.de and on „TraceParts“.

Legend:

Size A:	max. outside dimension	Size B:	distance between plug-in pegs/ nipples	Size C:	radius coarse dust filter drilled hole	Size D:	height/ thickness of material
----------------	------------------------	----------------	---	----------------	---	----------------	----------------------------------



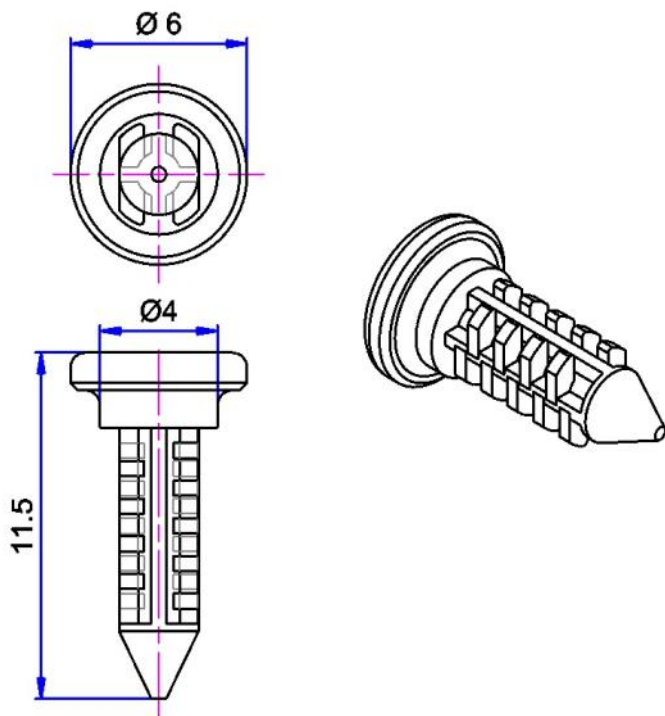
For Info!

With our CO2 Laser we are able to cut out variable contours from various materials/ filter materials, foam materials and seal materials etc. (see page 27).

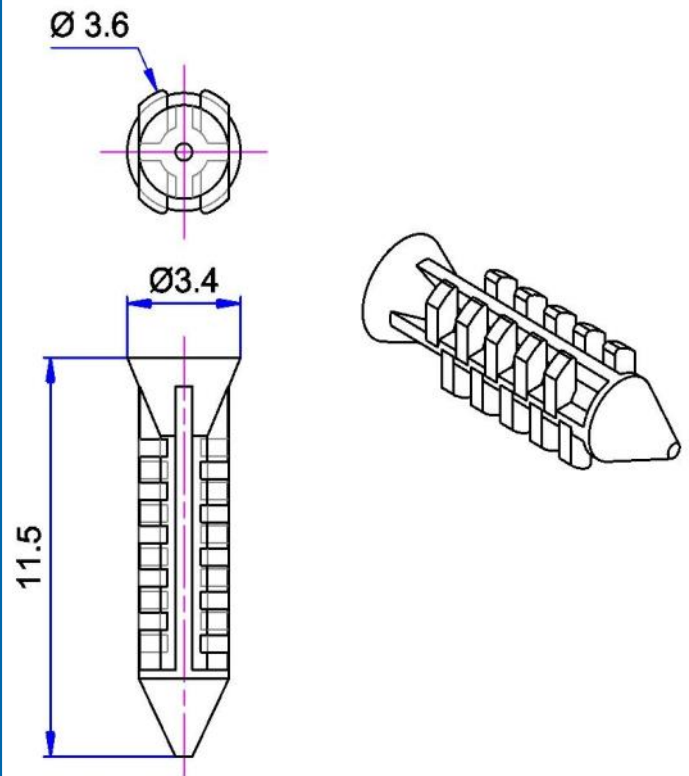
Material: Plastic (PA6)
Colour: black (other colours on request)
Fire resistance: UL94-V-0
Equals guideline: EG 2011/65/EU (RoHS) and EG 1907/2006 (REACH)



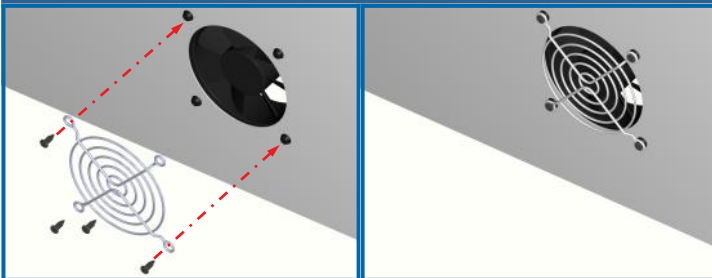
Lamella rivet



Safety rivet



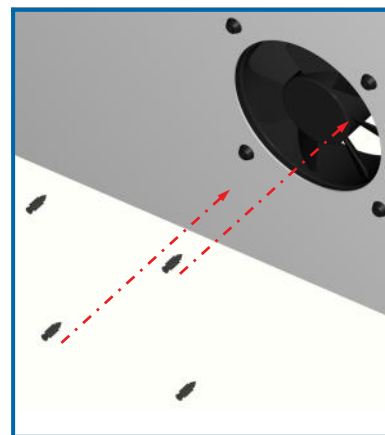
With our specially developed lamella rivets customary guard grills can be fixed while plugging into the drilled holes of the fan sleeve pegs.
 But only valid for type LM-40-xx to LM-92-xx.



Lamella rivets Article no.

LN-36-01

The specially developed safety rivets can be plugged into the drilled holes of the fan sleeve pegs.
 But just valid for type LM-40-xx to LM-92-xx .
 thus fixed fans will survive drop- and vibration tests under extraordinary conditions.



Safety rivets Article no.

SN-36-01

Attention! Only valid and available for fan sleeve types LM-40-xx to LM-92-xx!

CAD Data sheets on www.thoptec.de and on „TraceParts“.

**Material:****Colour:****Hardness:****Temperature resistance:****Fire resistance:****Equals guideline:**

TPE (Thermoplastic elastomer)

black

approximately 65 °Shore A

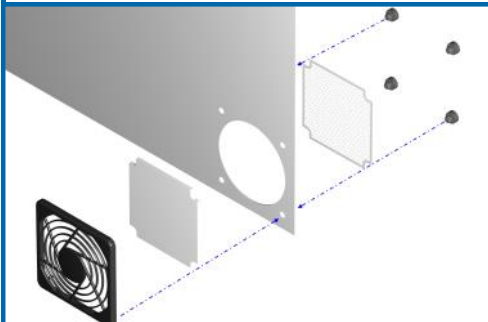
from -40 to +100° C

UL94-V-0

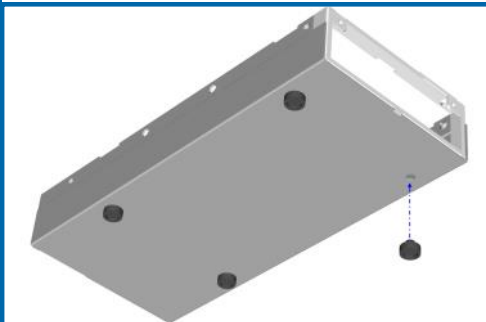
EG 2011/65/EU (RoHS) and EG 1907/2006 (REACH)

Application examples

In combination with our universal mounting elements you can fix all available accessories for axial fan sleeves.



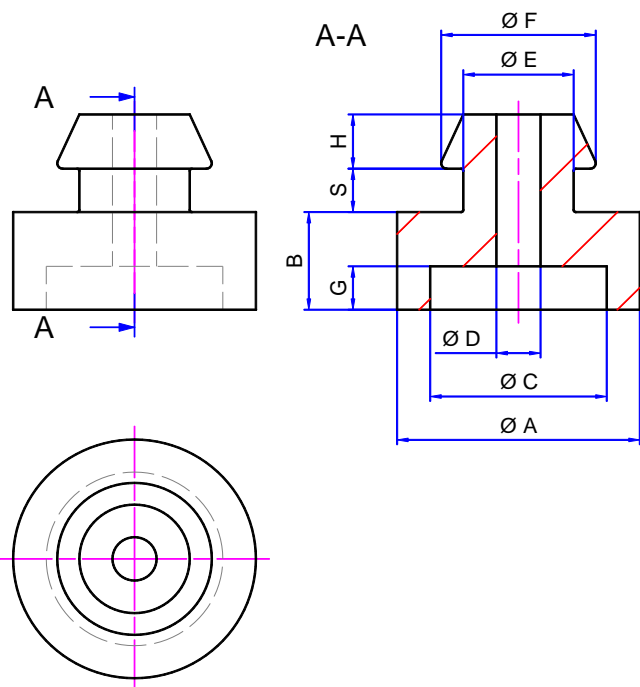
The universal mounting elements can be used for instance as pegs for housing boxes.



The universal mounting elements are also suitable as a stop buffer.



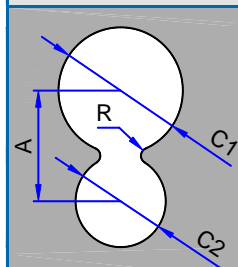
On request the universal mounting elements are also available in various dimensions.



Mounting styles

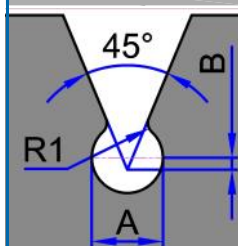


Universal mounting elements can be fixed easy by plugging the peg into a slightly chamfered hole (diameter 5,2 mm) in the mounting panel...



...or by plugging the peg into a 8-shaped perforation, first into the larger hole of the mounting panel and then push or pull it into the smaller hole.

A	C1	C2	R
6,5	7,5	5,2	1,0



The plug-in peg of the universal mounting element can also be pushed into a conical cut-out, until it has been snapped in (see picture left).

A	B
5,2	0,5

All dimensions in mm!

Article number:

UME

110

45

10 or 20

Article

diameter size A
in 1/10 mm

height dimension B
in 1/10 mm

panel thickness:
10 = from 0,75 to 1,25 mm
20 = from 1,50 to 2,50 mm

Article no.	A	B	C	D	E	F	G	H	S	Panel thickness
UME-110-45-10	11,0	4,5	8,0	2,0	5,0	7,0	2,0	2,5	1,0	0,75 bis 1,25
UME-110-45-20	11,0	4,5	8,0	2,0	5,0	7,0	2,0	2,5	2,0	1,50 bis 2,50

All dimensions in mm!

Other sizes on request!

CAD Data sheets on www.thoptec.de and on „TraceParts“.