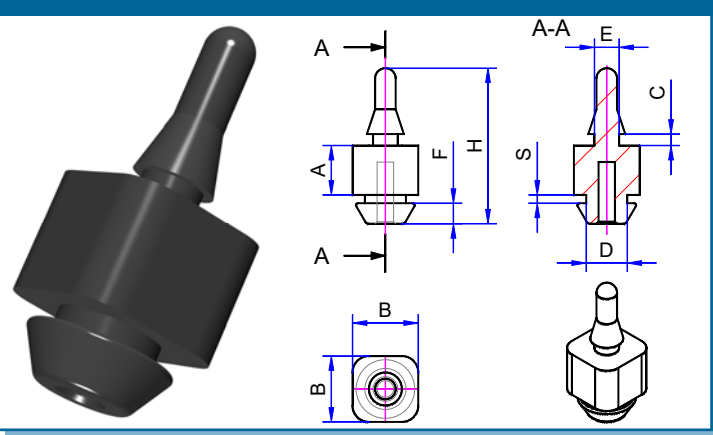
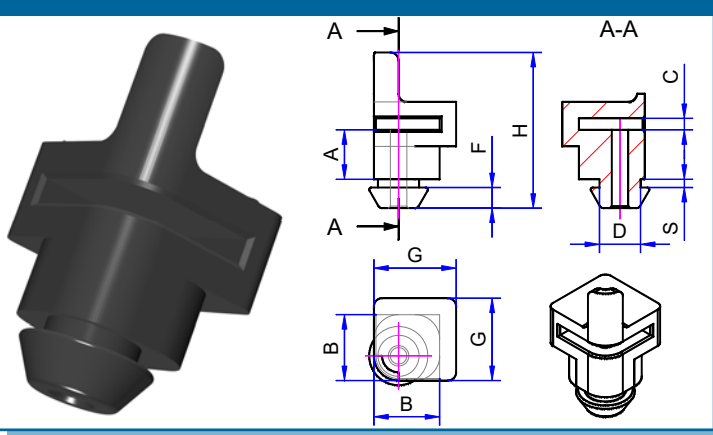


Material: TPE (Thermoplastic elastomer)
Colour: black
Hardness: approximately 65° Shore A
Temperature resistance: from - 40 to +100° C
Fire resistance: UL94-V-0
Equals guideline: RoHS 2015/863/EU and EG 1907/2006 (REACH)

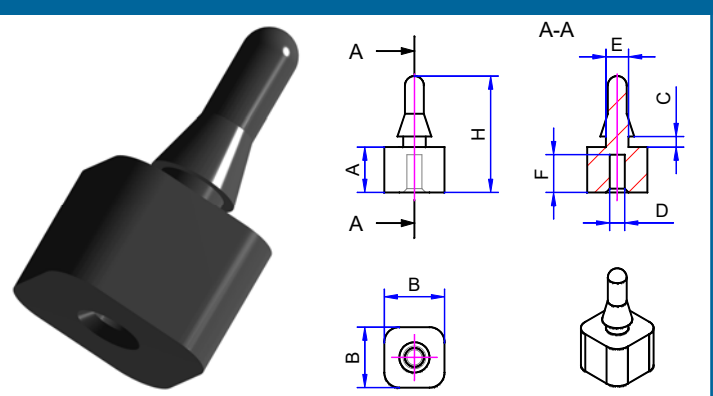
Plug-in element with plug-in peg/ Article no. SES-xx



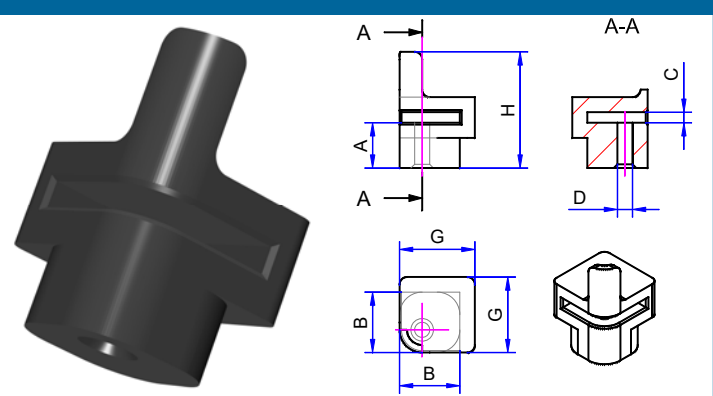
Corner element with plug-in peg/ Article no. EES-xx



Plug-in element with drilled hole/ Article no. SEB-xx



Corner element with drilled hole/ Article no. EEB-xx



Article number: **SES / EES** **16** **60** **30 oder 40** **10 oder 20**
SEB / EEB

Article thickness of PCB in 1/10 mm dimension A in 1/10 mm dimension E in 1/10 mm 30 = for 3 - 3,5 mm drilled holes 40 = for 4 - 4,5 mm drilled holes 10 = for panel thickness from 0,75 to 1,25 mm 20 = for panel thickness from 1,50 to 2,50 mm

Article no.	A	B	C	D	E	F	H	S
SES-16-50-30-10	5,0	8,0	1,4	5,0	3,0	2,5	17,9	1,0
SES-16-60-30-10	6,0	8,0	1,4	5,0	3,0	2,5	18,9	1,0
SES-16-80-30-10	8,0	8,0	1,4	5,0	3,0	2,5	20,9	1,0
SES-16-100-30-10	10,0	8,0	1,4	5,0	3,0	2,5	22,9	1,0
SES-16-50-30-20	5,0	8,0	1,4	5,0	3,0	2,5	18,9	2,0
SES-16-60-30-20	6,0	8,0	1,4	5,0	3,0	2,5	19,9	2,0
SES-16-80-30-20	8,0	8,0	1,4	5,0	3,0	2,5	21,9	2,0
SES-16-100-30-20	10,0	8,0	1,4	5,0	3,0	2,5	23,9	2,0
SES-16-50-40-10	5,0	8,0	1,4	5,0	4,0	2,5	18,9	1,0
SES-16-60-40-10	6,0	8,0	1,4	5,0	4,0	2,5	19,9	1,0
SES-16-80-40-10	8,0	8,0	1,4	5,0	4,0	2,5	21,9	1,0
SES-16-100-40-10	10,0	8,0	1,4	5,0	4,0	2,5	23,9	1,0
SES-16-50-40-20	5,0	8,0	1,4	5,0	4,0	2,5	19,9	2,0
SES-16-60-40-20	6,0	8,0	1,4	5,0	4,0	2,5	20,9	2,0
SES-16-80-40-20	8,0	8,0	1,4	5,0	4,0	2,5	22,9	2,0
SES-16-100-40-20	10,0	8,0	1,4	5,0	4,0	2,5	24,9	2,0
SEB-16-60-30	6,0	8,0	1,4	2,0	3,0	5,0	15,4	-
SEB-16-80-30	8,0	8,0	1,4	2,0	3,0	5,0	17,4	-
SEB-16-100-30	10,0	8,0	1,4	2,0	3,0	5,0	19,4	-
SEB-16-60-40	6,0	8,0	1,4	2,0	4,0	5,0	16,4	-
SEB-16-80-40	8,0	8,0	1,4	2,0	4,0	5,0	18,4	-
SEB-16-100-40	10,0	8,0	1,4	2,0	4,0	5,0	20,4	-

Article no.	A	B	C	D	F	G	H	S
EES-16-50-10	5,0	8,0	1,4	5,0	2,5	10,0	17,9	1,0
EES-16-60-10	6,0	8,0	1,4	5,0	2,5	10,0	18,9	1,0
EES-16-80-10	8,0	8,0	1,4	5,0	2,5	10,0	20,9	1,0
EES-16-100-10	10,0	8,0	1,4	5,0	2,5	10,0	22,9	1,0
EES-16-50-20	5,0	8,0	1,4	5,0	2,5	10,0	18,9	2,0
EES-16-60-20	6,0	8,0	1,4	5,0	2,5	10,0	19,9	2,0
EES-16-80-20	8,0	8,0	1,4	5,0	2,5	10,0	21,9	2,0
EES-16-100-20	10,0	8,0	1,4	5,0	2,5	10,0	23,9	2,0
EEB-16-50	5,0	8,0	1,4	2,0	-	10,0	14,4	-
EEB-16-60	6,0	8,0	1,4	2,0	-	10,0	15,4	-
EEB-16-80	8,0	8,0	1,4	2,0	-	10,0	17,4	-
EEB-16-100	10,0	8,0	1,4	2,0	-	10,0	19,4	-

The needed tools for manufacturing the PCB fasteners are designed in modular construction.

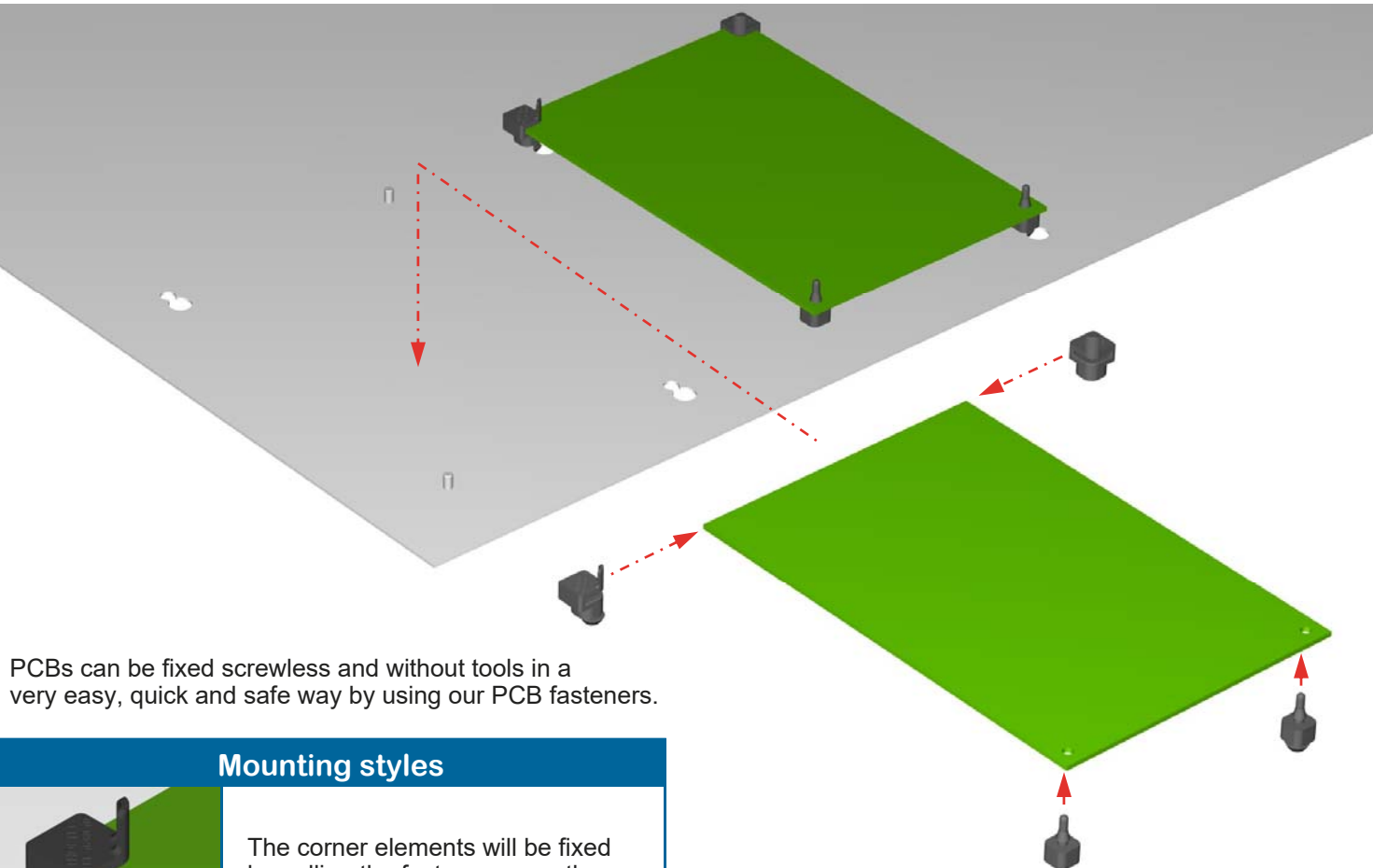
We are able to realize very easy various dimensions of distances according size A.

Please contact!



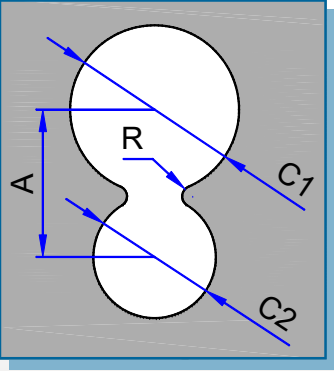
For being able to fix PCBs with our elastic PCB fastening elements you must provide the mounting panel or housing wall either with drilled holes, 8-shaped hole cut-outs or forced in pins.

The mounting styles of the elements are depending on the type of PCB. The PCB fasteners can be fixed either by pulling the fasteners over the PCB edges or by drilled holes in the printed circuit board.



PCBs can be fixed screwless and without tools in a very easy, quick and safe way by using our PCB fasteners.

Mounting styles	
	The corner elements will be fixed by pulling the fasteners over the PCB edges.
	The plug-in elements will be plugged into the drilled hole and pulled out on the backside of a printed circuit board.
	Types of SES and EES fasteners with plug-in pegs can be fixed easy by plugging into a slightly chamfered hole (diameter 5,5mm) in the mounting panel.
	...or by plugging-in the peg into a 8-shaped perforation, first into the larger hole of the mounting panel and then push or pull them into the smaller hole.
	Types of SEB and EEB fasteners with a drilled hole need to be plugged onto a forced-in pin on the mounting panel with dimensions of 3,0 x 6,0mm, with or without threads.



Attention!

By adjusting the size of dimension A and radius R the resistance of power to mount and dismount the hard disk sleeves can be altered.

Dimensions of hole cut-outs			
A	C1	C2	R
6,5	7,5	5,2	1,0

All dimensions in mm!