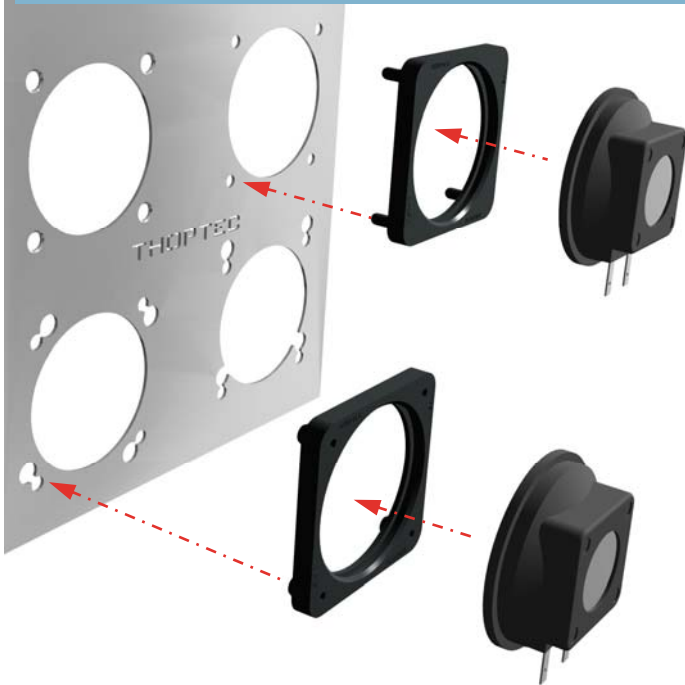


Material: TPE (Thermoplastic elastomer)
Colour: black
Hardness: approximately 65° Shore A
Temperature resistance: from -40 to +100° C
Fire resistance: UL94-V-0
Equals guideline: RoHS 2015/863/EU and EG 1907/2006 (REACH)



The speaker fastening elements are available in two different versions.

Type SN

with plug-in nipples to push/ pull through drilled holes.

Same function as the fan sleeve type SLM, please look for more

info on page 9-10.



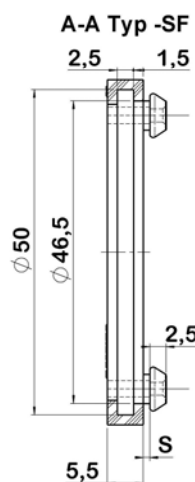
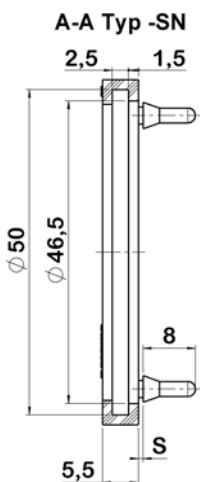
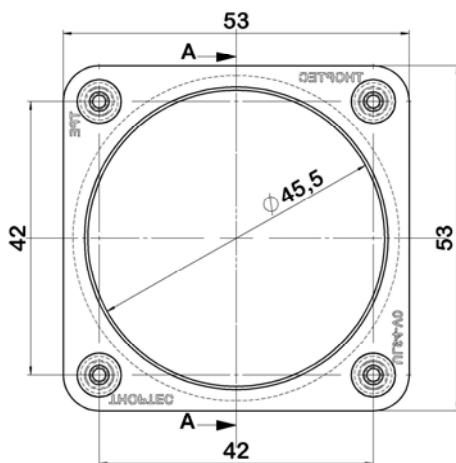
Type SF

with plug-in pegs for a very quick plug-in turn or plug-in push/ pull mounting style, including drilled holes to fix guard grills etc.

Same function as the fan sleeve type SLM, please look for more infos on page 4-7.



All available accessories for the fan sleeves type LM-50-xx-xx-B42 will fit to the speaker fasteners according type SF.



Our new version with improved cushioning !

Date 06 2023

Article number: **LSBE** — **50** — **SN / SF** — **10 / 20**

Article

speaker size

type code

depends on panel thickness

type SN with plug-in nipples
type SF with plug-in pegs

Article no.	S	Panel thickness
LSBE-50-SN-10	0,75	0,75 to 1,50
LSBE-50-SN-20	1,75	2,00 to 3,50
LSBE-50-SF-10	1,00	0,75 to 1,25
LSBE-50-SF-20	2,00	1,50 to 2,50

With the speaker fastening elements you are able to install small round speakers with a diameter of 50 mm such as the **Digisound FE5050** or the **VISATON K50WP**.

THE ADVANTAGES:

- Speakers can be fixed without tools, screwless, quick, simple and safe.
- Lower installation costs due to shorter installation times and not any longer needed screws.
- Prolongates lifetime of speakers while protecting against vibrations.

All dimensions in mm!

Other sizes on request!

CAD Data sheets on www.thoptec.de and on „TraceParts“.