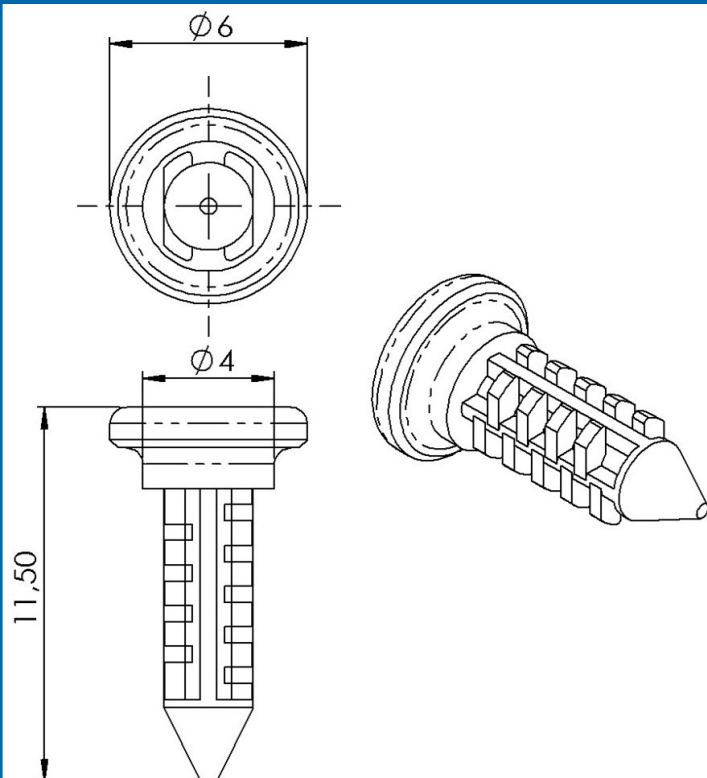


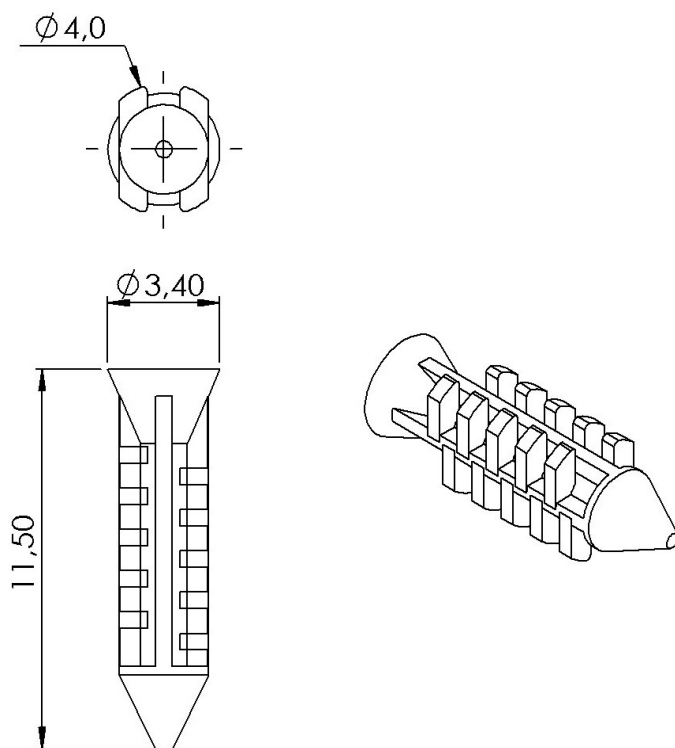
Material: Plastic (PA6)
Colour: black (other colours on request)
Fire resistance: UL94-V-0
Equals guideline: REACH and RoHS



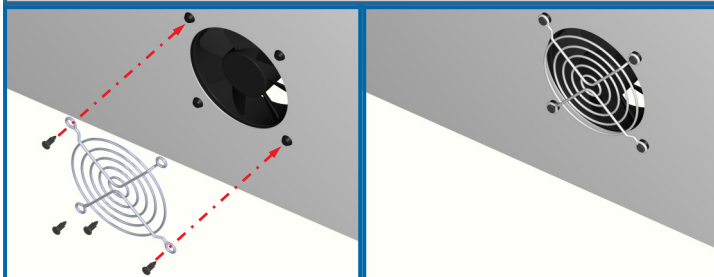
Lamella rivet



Safety rivet

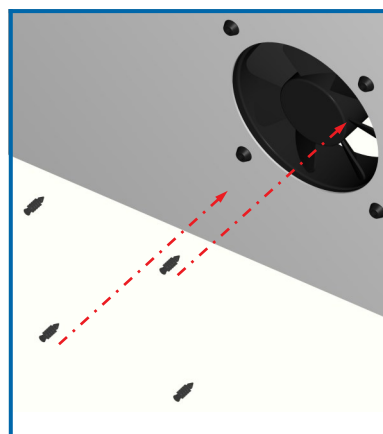


With our specially developed lamella rivets standard guard grills can be attached using the drilled holes of the fan sleeves feet.
 But only valid for type LM-40-xx to LM-92-xx.



Lamella rivets Article no.

LN-36-01



The specially developed safety rivets can be plugged into the drilled holes of the fan sleeves feet.
 But only valid for types LM-40-xx to LM-92-xx .
 Thus fixed fans will survive drop and vibration tests under extraordinary conditions.

Safety rivets Article no.

SN-36-01

Attention! Only valid and available for fan sleeve types LM-40-xx to LM-92-xx!

CAD Data sheets on www.thoptec.com and on „TraceParts“.